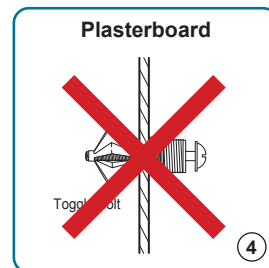
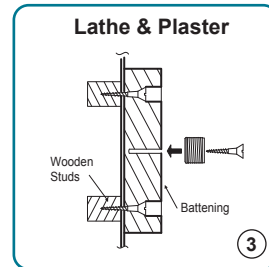
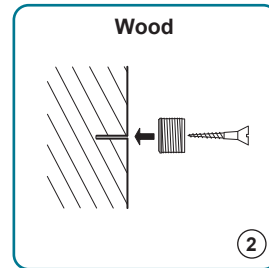
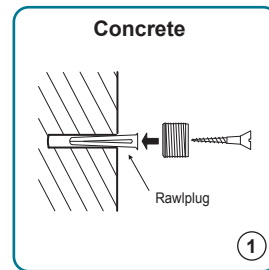


INSTALLATION TIPS



Angled Top to Floor (RAAS) Rod Installation

IMPORTANT: It is essential to check that the top ceiling fixings are strong enough to take the weight of the items being displayed while allowing for tension in the rods.

- 1) Select the upper height to which rod is to begin. Fix part (A) of the top angled fitting to wall, using a suitable fixing for wall type:
 - for wooden walls use a wood screw.
 - for a cavity wall use a spring toggle bolt.
 - for a solid wall use a rawl plug and screw.
- 2) Screw part (B) into part (A), and adjust the angle as shown in step (H).
- 3) Using a plumb-line, descend from (A), and affix floor fitting (F) to floor using appropriate type of fixing.
- 4) Screw rod into top fitting (A-B) using a left hand thread, and add as many additional rods as required.
- 5) Cut bottom rod in line with the decorative line around floor fitting (F).
- 6) Slide tensioner (C), spring (D), and rod grip (E) onto the rod. Tighten grip (E) to the end of the rod with allen key provided.
- 7) Adjust the tension of the rod by screwing tensioner (C) into floor fitting (F). See (G) below.

NOTE: It is important to check the strength of the top fixing(s). NOVA DISPLAY® takes no responsibility for incorrect installation. This responsibility rests with the installer.

Rods are not supplied with fixing screws.

***** DO NOT INSTALL INTO PLASTERBOARD (DRYWALL) CEILINGS OR WALLS IF YOUR APPLICATION INCLUDES GLASS SHELVING OR OTHER HEAVY ITEMS.**

