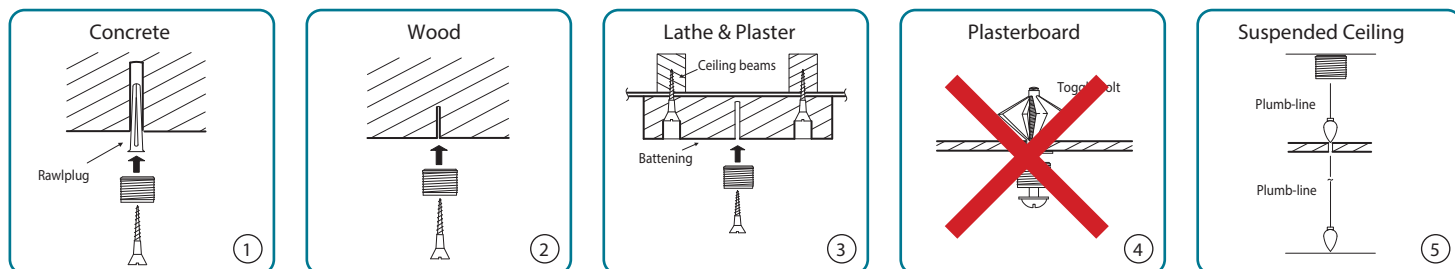


Installation Guidelines

NOVADISPLAY
INNOVATIVE DISPLAY SOLUTIONS

Cable Suspended Rimless LED Light Pocket

800.753.9688 • www.novadisplay.com



C101-4M/IS CABLE INSTALL

1) Measure the cable centers of your light pocket. This is the distance between holes for the cable systems to pass through the light pocket.

2) Install top fixings PC01/IS (A) to ceiling or window frame spaced out the same distance as the cable centers.

- for wooden ceilings use a wood screw.
- for cavity ceilings use a spring toggle bolt.
- for solid ceilings use a plug and screw.

3) Using a plumb-line, descend from PC01/IS (A), and fix PC01/IS (F) to floor.

4) Screw CF-T (B) to PC01/IS (A). Loosen grub screws in PCP-02 (E) with the hex key provided and then remove compression Spring (D) and CF-B (C).

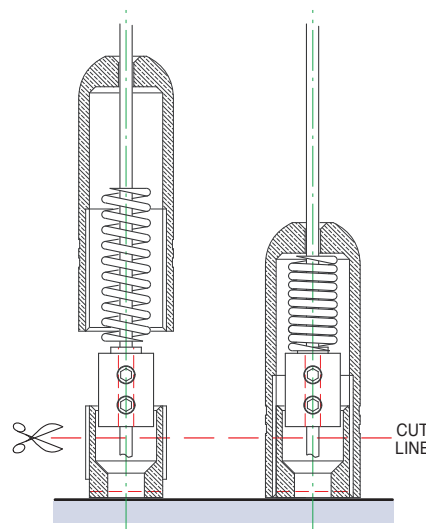
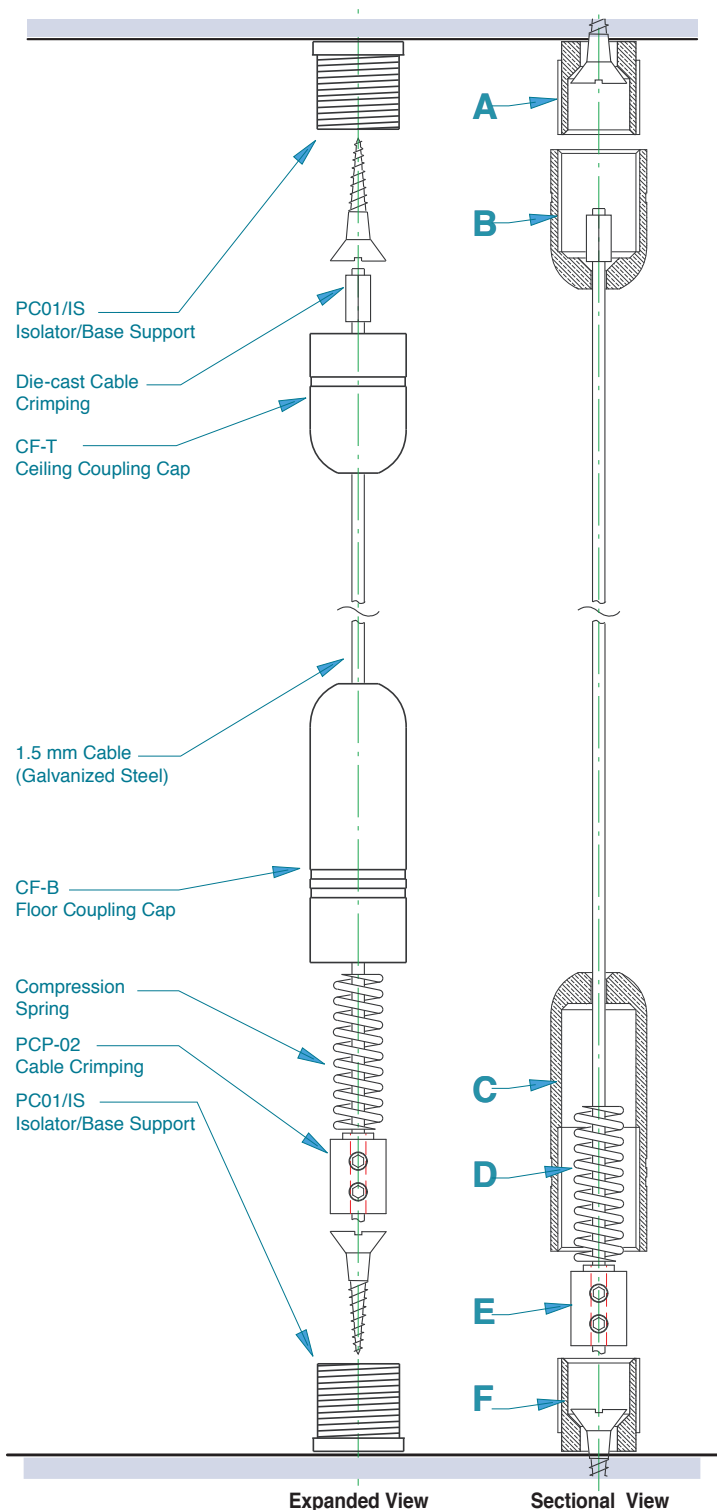
5) With the cable systems untrimmed and mounted at the ceiling only, plumb each cable through the light pockets and slide up into position. Once the light pockets are in place reinstall CF-B (C), Compression Spring (D), and Crimp PCP-02 (E).

IMPORTANT: DO NOT TRIM CABLE SYSTEM TO LENGTH YET. ONLY AFTER INSERTING LIGHT POCKETS SHOULD YOU TRIM THE CABLE SYSTEM.

6) Cut off excess cable as per diagram below.

7) Adjust the tension of the cable by screwing CF-B (C) into PC01/IS (F).

NOTE: It is important to check the strength of the top fixing. NOVADISPLAY SYSTEMS takes no responsibility for incorrect installation. This responsibility rests with the installer.



Installation Guidelines

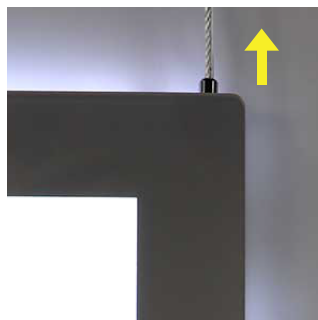
LIGHT POCKET MOUNTING

Read instruction sheet carefully before starting assembly • Separate all parts and check quantities • Account for all parts before discarding any packaging materials

Insert and slide up the LED Light Pockets on the cables, after installing top fixings with cables (as per guidelines on page 2)

NOTE: Press down on the gripper button on top of the light panel while sliding the panel up the cable.

NOTE: Do not trim the cable bottom, until all light pockets are inserted on the cable.

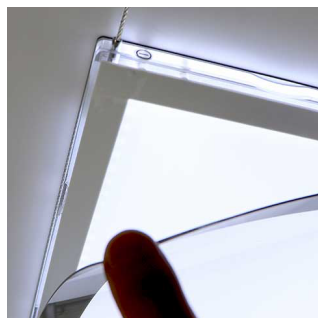


②

Make sure to insert all light pockets facing the correct orientation.

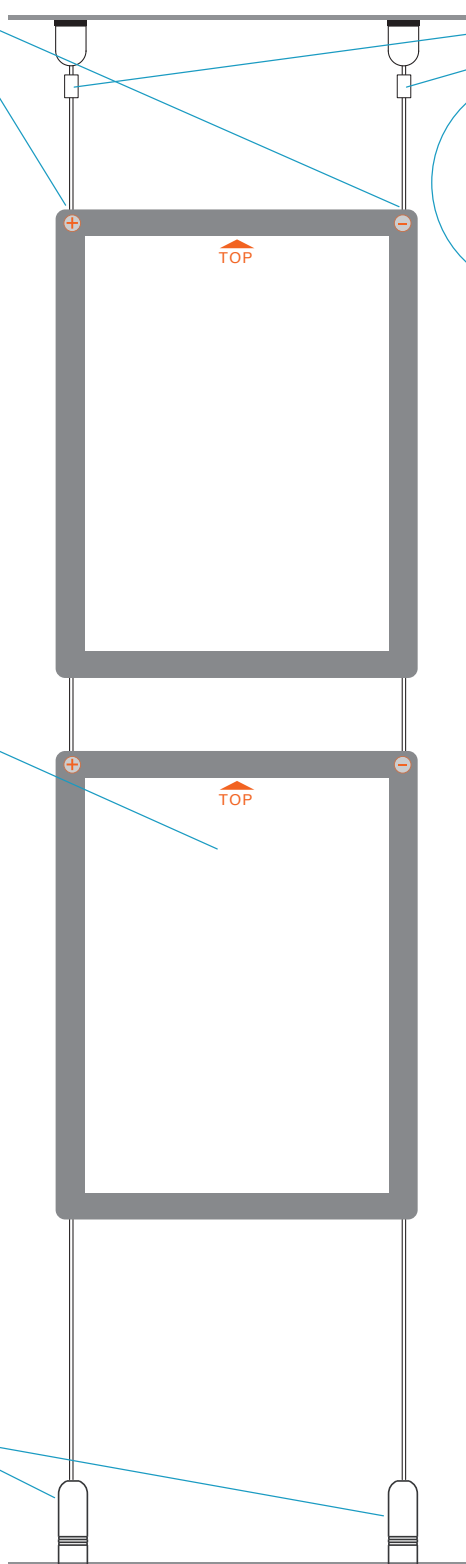
NOTE: LED Light Pockets front is the side that opens (opening should be positioned at the top)

NOTE: The LED Light Pockets are wired with a positive and negative side. The positive side is on the right (with pocket front facing you). Positive and Negative sides are clearly labeled with removable stickers.



③

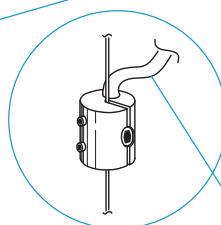
Finish installation of cable suspension kit by attaching tensioners to the cables (see Page #2 for detailed mounting and tensioning instructions)



④

Each C101-4M/IS cable set will receive a power connector. Secure the power connectors to the cable using the hex-key provided.

NOTE: The CS08 Power Connectors may be installed anywhere on the cable (top or bottom). This is at the customer's discretion.



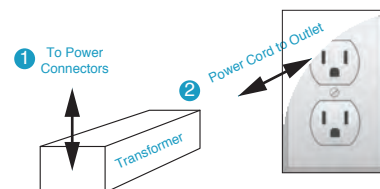
⑤

Secure the LPS-EXT extension cord to the CS08 Power Connectors and attach to the Transformer Line.

NOTE: Make sure the Transformer is NOT plugged in while connecting power to the CS08 Power Connectors.

Once the transformer is connected to the extension cord, then the transformer may be plugged in.

IMPORTANT: DO NOT PLUG IN THE TRANSFORMER UNTIL ALL ABOVE STEPS ARE COMPLETED



IMPORTANT: Make sure there is not metal around display which will connect the cables together. This could cause the transformer to short out. If the display is mounted on a metal surface, an isolator must be used on each cable.

TROUBLE SHOOTING

If the LED Light Pockets do not illuminate after completing steps above, unplug the **Transformer** and switch the **Power Lines** connected to the **Power Connectors** to change the polarity. After securing the **Power Lines** plug the **Transformer** in to the **Outlet** and the **LED Light Pockets** will illuminate.