

Installation Guidelines

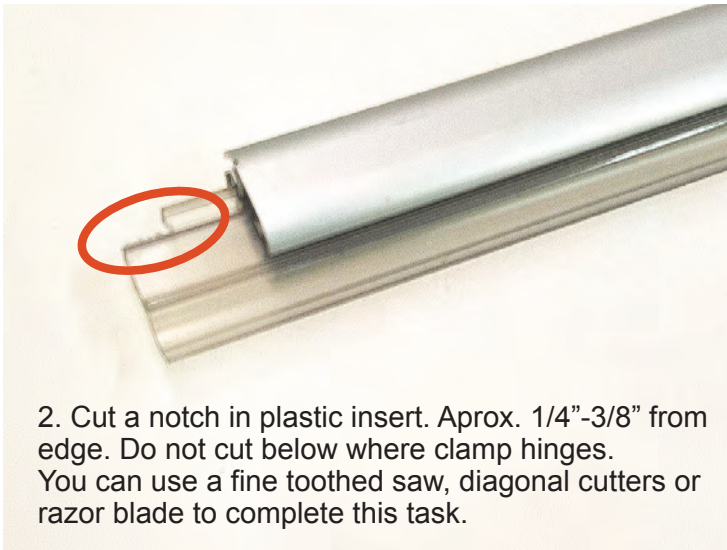
NOVADISPLAY
INNOVATIVE DISPLAY SOLUTIONS

Install P02 on Anogotcha Holder

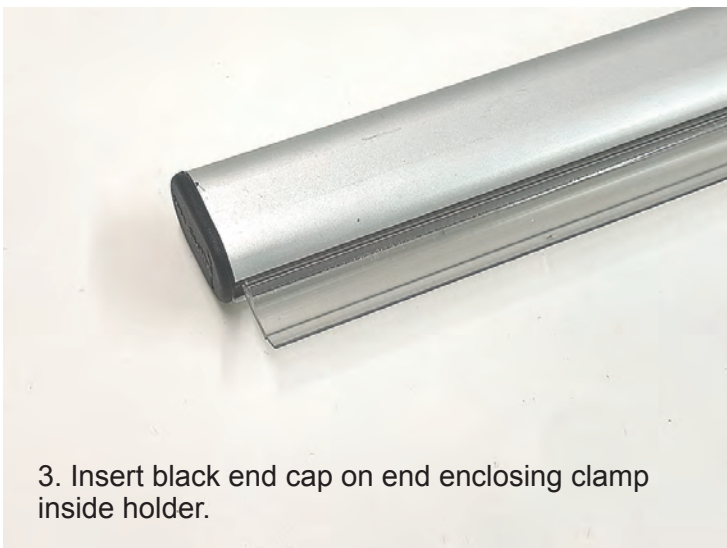
800.753.9688 • www.novadisplay.com



1. Remove plastic clamp insert from holder.



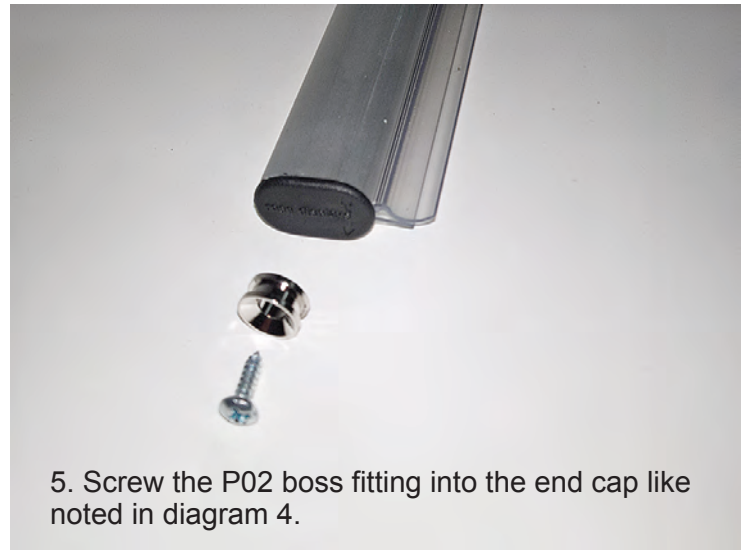
2. Cut a notch in plastic insert. Aprox. 1/4"-3/8" from edge. Do not cut below where clamp hinges. You can use a fine toothed saw, diagonal cutters or razor blade to complete this task.



3. Insert black end cap on end enclosing clamp inside holder.



4. Locate the "e" at the end of "Rose". This is where the screw point will screw into the black end cap.



5. Screw the P02 boss fitting into the end cap like noted in diagram 4.



6. This should be the end result.