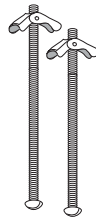
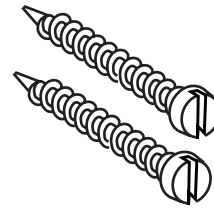


Spider Ceiling Track



Toggle Bolts



Wood Screws

Instructions for Hanging

Step 1

Place Spider Ceiling Track in position and mark all mounting holes on ceiling. **Fig. 1**

Note: Determine what type of ceiling you have and choose the appropriate mounting anchor for your ceiling type.

For plaster board ceilings use toggle bolt anchors.

For hard wood ceilings use wood screw anchor.

Plastic expansion anchors are not recommended for installation of this system.

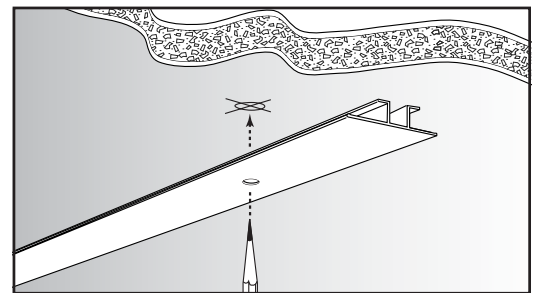


Figure 1

Step 2

Drill pilot holes for appropriate anchor. **Fig. 2**

Note: Use a 3/8" masonry bit for plasterboard/drywall when installing with toggle bolts.

Use a #48 or .076" drill bit when installing Spider ceiling track using wood screws.

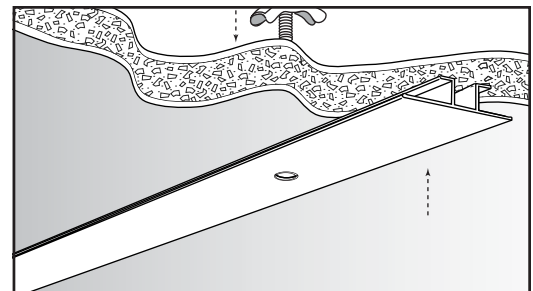


Figure 2

Step 3

Place bolts or screws through mounting holes in Spider ceiling track. **Fig. 3** If using toggle bolts, attach wing nuts to bolts and insert into predrilled holes in ceiling. Tighten bolts or screws until Spider ceiling track is snug and secure to ceiling.

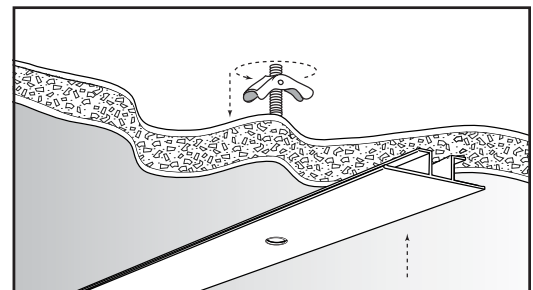
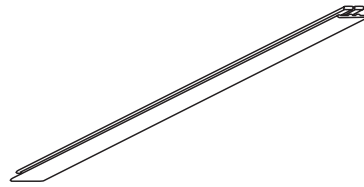


Figure 3

Step 4

Install Signware OneUp anchors with ladderless RoPole installation tool.



Tile Divider

Instructions for assembly

Step 1

Insert one end of Tile Divider under edge of grid on Drop Tile Ceiling.

Fig. 1

Step 2

Turn to lock opposite side of Tile Divider on opposite edge of grid.

Fig. 2

Step 3

Adjust the Tile Divider to preferred location on grid of Drop Tile Ceiling.

Fig. 3

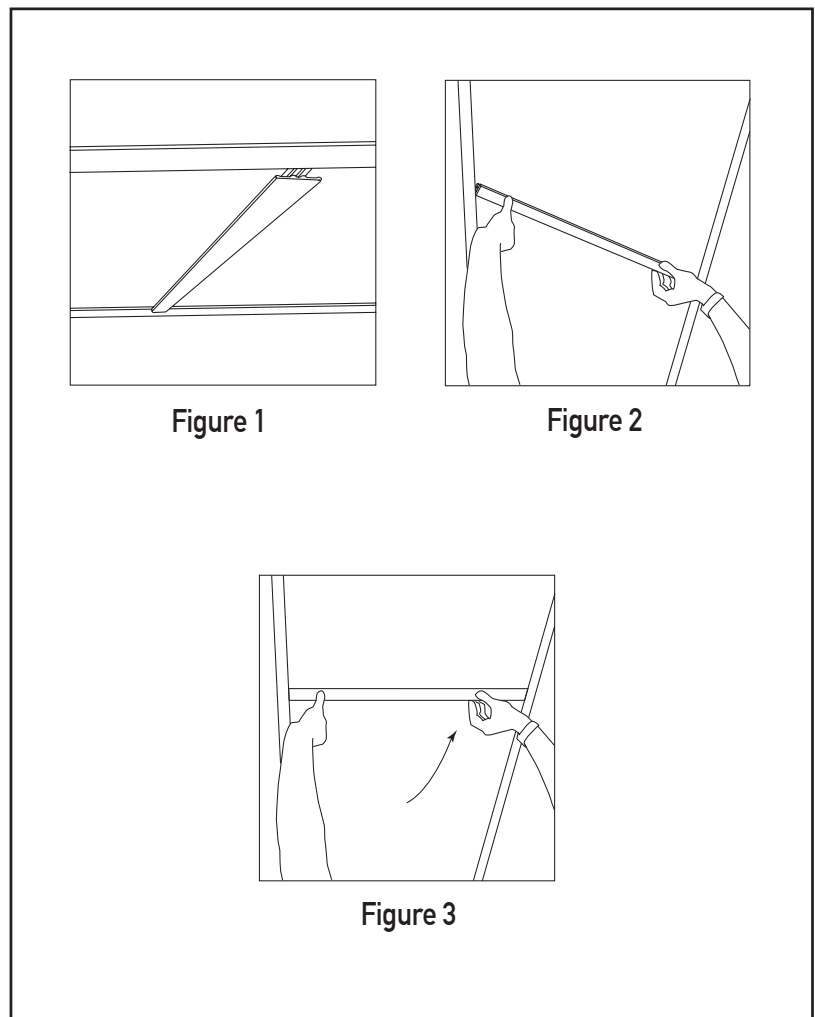


Figure 1

Figure 2

Figure 3