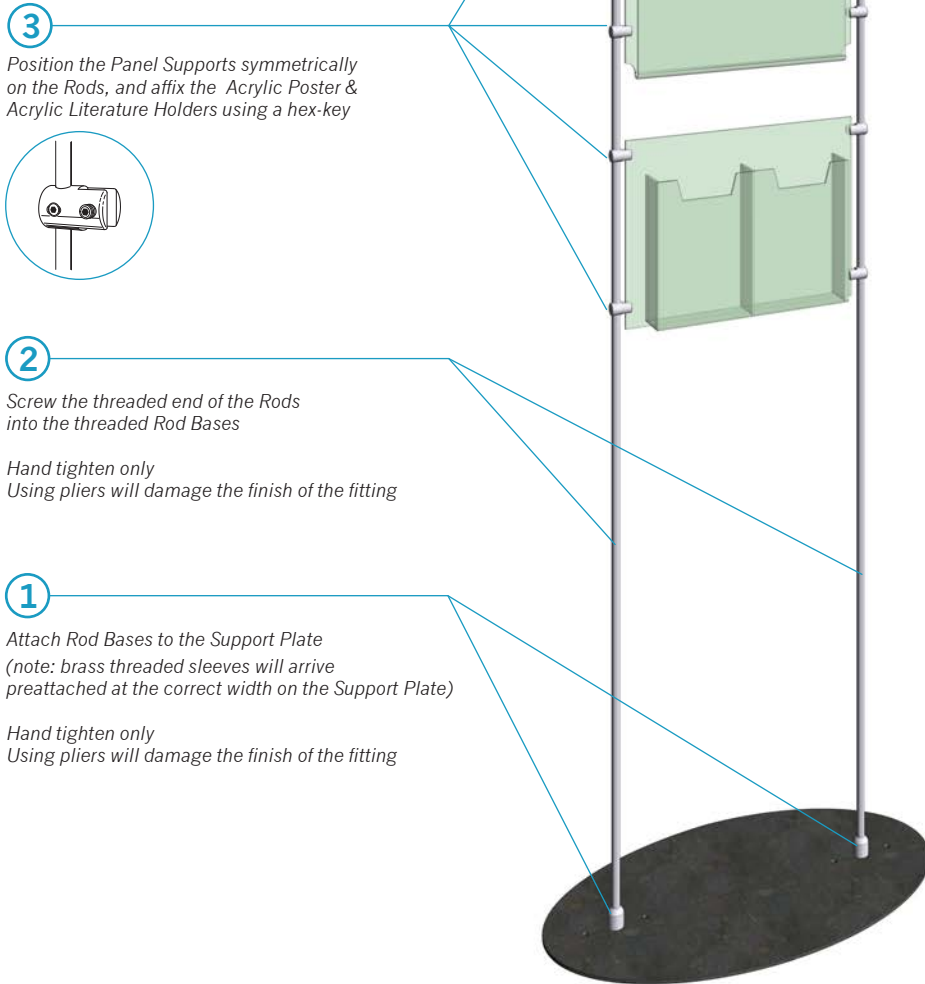


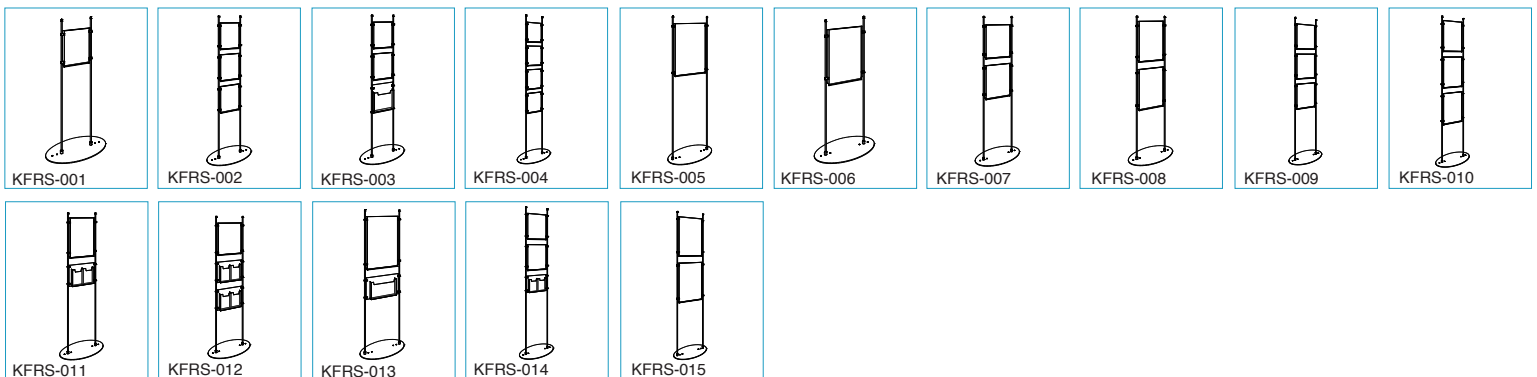
Totem Display Installation Guidelines

KFRS-001 • KFRS-015



Read instruction sheet carefully before starting assembly □ Separate all parts and check quantities □ Account for all parts before discarding any packaging materials

INDEX OF APPLICABLE MODELS:

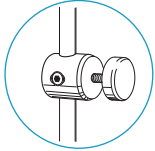


Totem Display Installation Guidelines

KFRS-016 • KFRS-018

3

Position the Panel Supports symmetrically on the Rods, and affix the Acrylic Poster & Acrylic Literature Holders using a hex-key



2

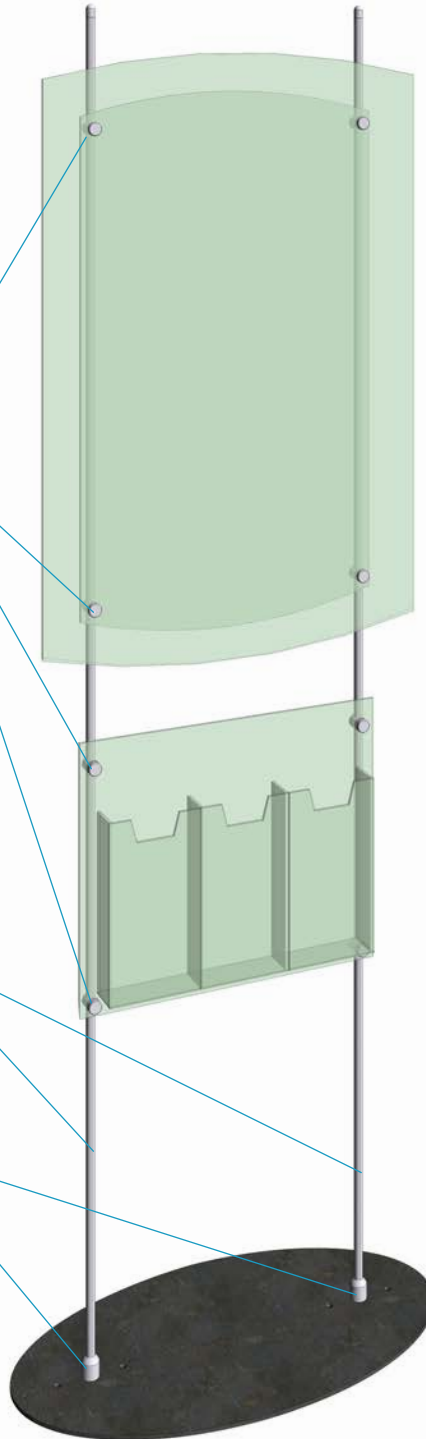
Screw the threaded end of the Rods into the threaded Rod Bases

Hand tighten only
Using pliers will damage the finish of the fitting

1

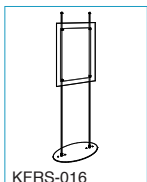
Attach Rod Bases to the Support Plate
(note: brass threaded sleeves will arrive preattached at the correct width on the Support Plate)

Hand tighten only
Using pliers will damage the finish of the fitting

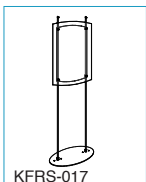


Read instruction sheet carefully before starting assembly □ Separate all parts and check quantities □ Account for all parts before discarding any packaging materials

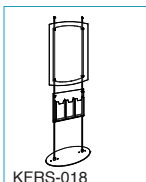
INDEX OF APPLICABLE MODELS:



KFRS-016



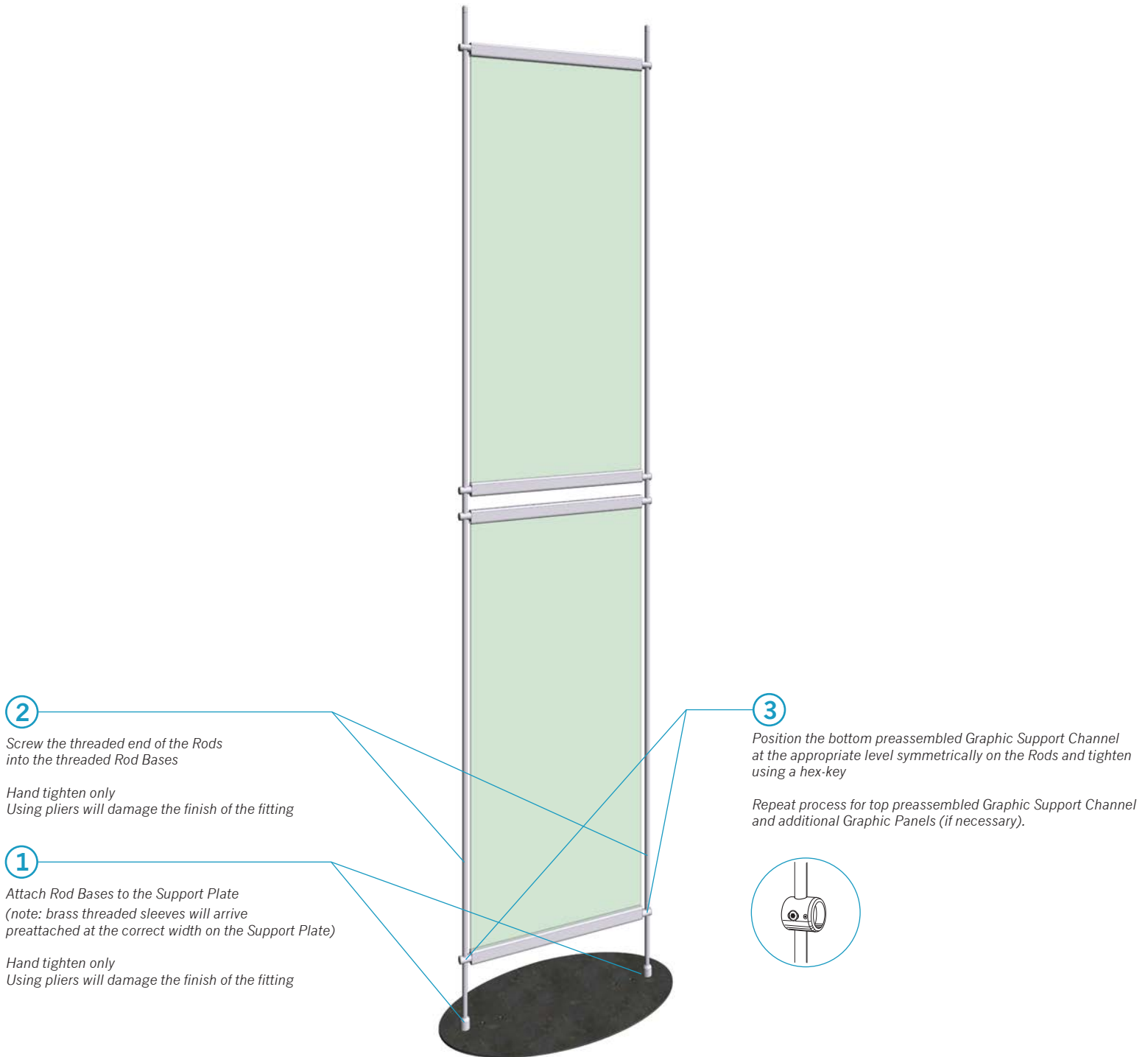
KFRS-017



KFRS-018

Totem Display Installation Guidelines

KFRS-021 • KFRS-025



2

Screw the threaded end of the Rods into the threaded Rod Bases

Hand tighten only
Using pliers will damage the finish of the fitting

1

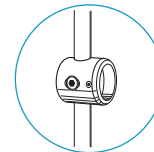
Attach Rod Bases to the Support Plate
(note: brass threaded sleeves will arrive preattached at the correct width on the Support Plate)

Hand tighten only
Using pliers will damage the finish of the fitting

3

Position the bottom preassembled Graphic Support Channel at the appropriate level symmetrically on the Rods and tighten using a hex-key

Repeat process for top preassembled Graphic Support Channel and additional Graphic Panels (if necessary).



Read instruction sheet carefully before starting assembly □ Separate all parts and check quantities □ Account for all parts before discarding any packaging materials

INDEX OF APPLICABLE MODELS:

